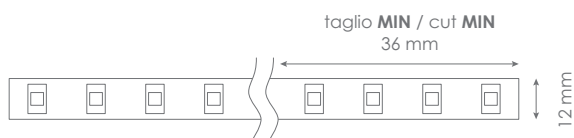
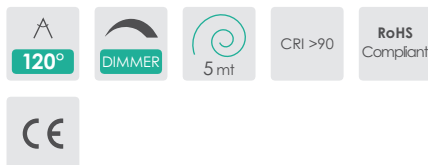


FLEX STANDARD 1700-2700



SPECIFICATIONS

Alimentazione / Operating Voltage	24 V
Potenza / Power	13,5 W/mt
Larghezza Pcb / Width Pcb	12 mm
Altezza / Height Stripe	2 mm
Lunghezza / Length Stripe	5000 mm
Taglio segmento/ Length per Cut	36 mm
N° LED	224 / mt
IP	20
Temperatura esercizio Storage Temperature	- 30° C - + 70°C
Lifetime	L70B20 50000H



Codice Code	Flusso Luminoso Luminous Flux	Efficienza Efficiency	Colore Luce Led Color
DA-STANDARD-1700-2700	1435 lm/mt	110 lm/W	2700 K



FLEX

STANDARD 1700-2700

Light efficiency:

110 Lumen/Watt

Light quality:

CRI: 94,2

Color temperature:

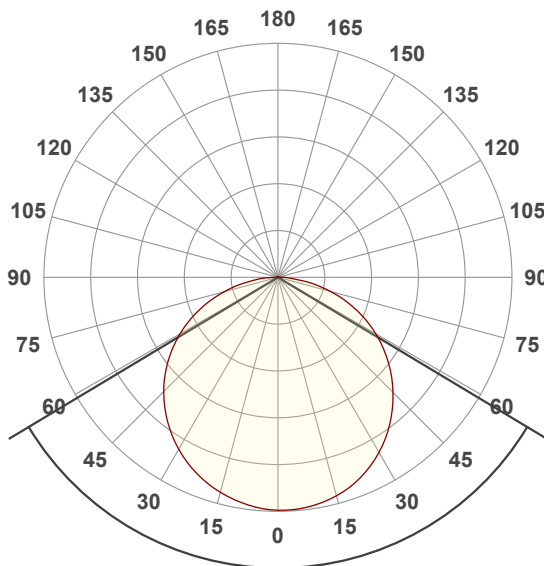
2816 K

Output: 1435 lm

Peak: 464 cd

Power: 13,0 W

24,0V @ 0,542A



Beam angle

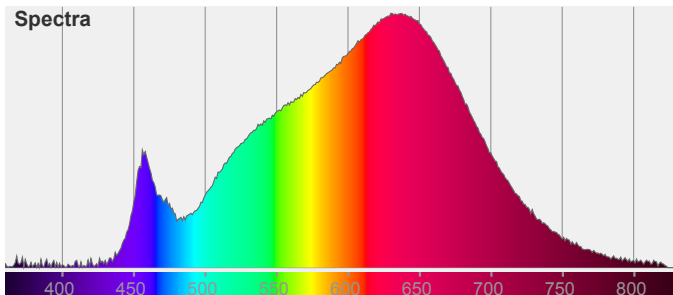
118°

Color

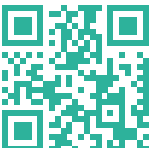


CIE1931
x: 0,454
y: 0,415

Spectra



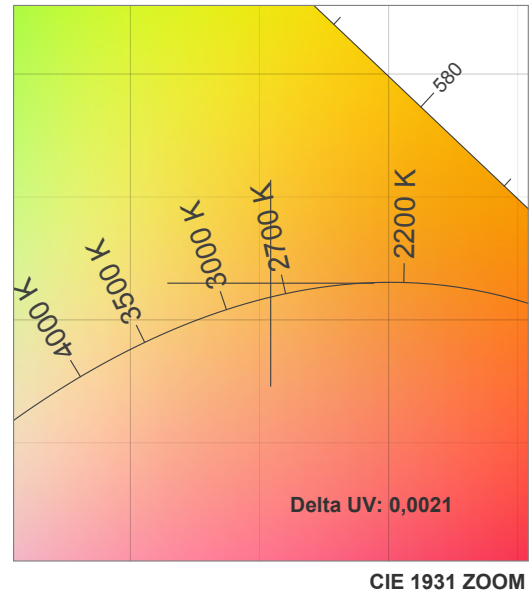
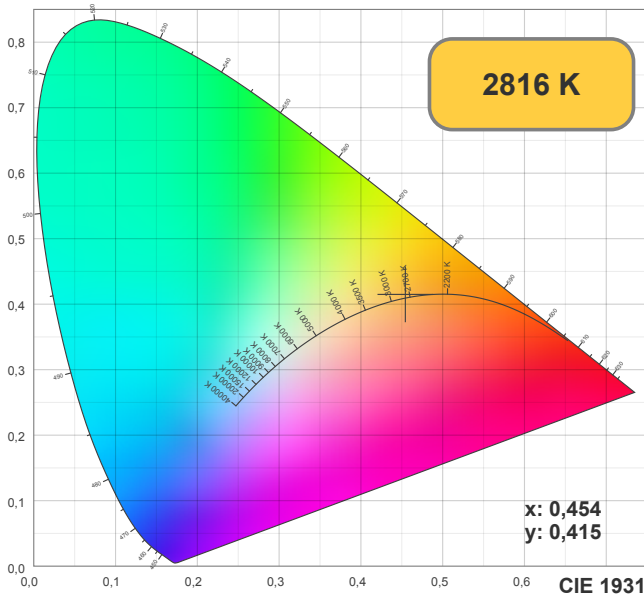
Light measurement was created using the Viso Systems - Light Inspector. www.visosystems.com



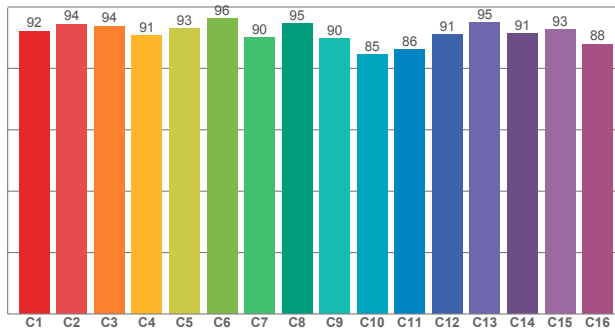
Via Cadorna, 40/42
20032 Cormano (MI)
Tel. +39 02 84269630
Fax +39 02 84269631
info@lightsolution.it
www.lightsolution.it

FLEX

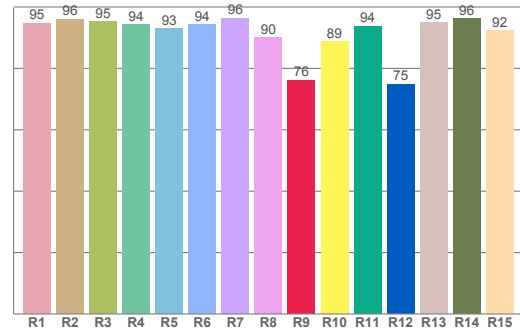
STANDARD 1700-2700



TM30: 91,2



CRI: 94,2 (R1-R8)



CRI R values, only R1-R8 are used to calculate final CRI value

R1	R2	R3	R4	R5	R6	R7	R8	R9	R10	R11	R12	R13	R14	R15
94,72	96,06	95,23	94,15	92,94	94,25	96,34	90,05	76,20	88,71	93,82	74,81	94,99	96,27	92,35

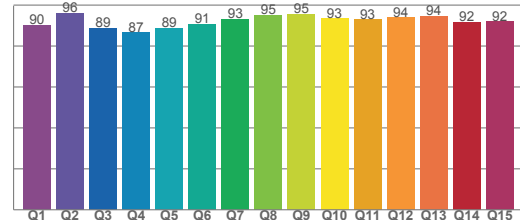
TM30 C values, 16 binned values out of total of 99 C values

C1	C2	C3	C4	C5	C6	C7	C8	C9	C10	C11	C12	C13	C14	C15	C16
92,10	94,34	93,78	90,62	92,96	96,22	90,07	94,64	89,70	84,55	86,01	91,06	94,81	91,36	92,57	87,82

CQS Q values

Q1	Q2	Q3	Q4	Q5	Q6	Q7	Q8	Q9	Q10	Q11	Q12	Q13	Q14	Q15
90,20	95,95	88,77	86,55	88,93	90,73	93,23	95,11	95,50	93,37	92,85	93,90	94,49	91,60	91,96

CQS: 91,6



Color parameters

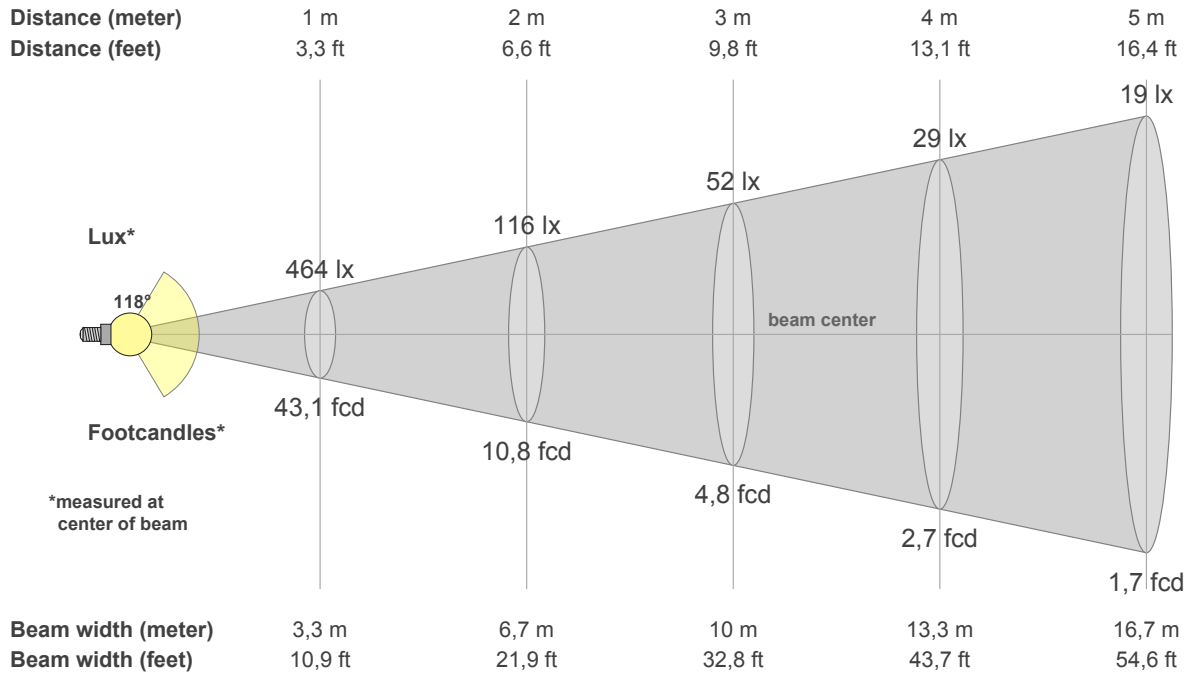
CCT	CRI	CRI R9	TM30 Rf	TM30 Rg	CQS	x	y	u	v	Duv
2816 K	94,2	76,2	91,2	97,5	91,6	0,5	0,4	0,3	0,4	0,0021



Via Cadorna, 40/42
20032 Cormano (MI)
Tel. +39 02 84269630
Fax +39 02 84269631
info@lightsolution.it
www.lightsolution.it

FLEX

STANDARD 1700-2700



Intensities in 0° c-plane

0°	5°	10°	15°	20°	25°	30°	35°	40°	45°	50°	55°	60°	65°	70°	75°	80°	85°	90°	95°
464	464	459	451	440	423	403	380	353	324	294	260	225	189	149	109	69	34	13	1
100%	100%	99%	97%	95%	91%	87%	82%	76%	70%	63%	56%	49%	41%	32%	24%	15%	7%	3%	0%

Intensities in 0° c-plane

0°	5°	10°	15°	20°	25°	30°	35°	40°	45°	50°	55°	60°	65°	70°	75°	80°	85°	90°	95°
464	464	459	451	440	423	403	380	353	324	294	260	225	189	149	109	69	34	13	1
100%	100%	99%	97%	95%	91%	87%	82%	76%	70%	63%	56%	49%	41%	32%	24%	15%	7%	3%	0%

Intensities in 180° c-plane

0°	5°	10°	15°	20°	25°	30°	35°	40°	45°	50°	55°	60°	65°	70°	75°	80°	85°	90°	95°
464	461	454	444	431	415	396	374	350	322	292	260	225	189	151	112	74	38	15	3
100%	99%	98%	96%	93%	90%	85%	81%	75%	69%	63%	56%	49%	41%	33%	24%	16%	8%	3%	1%

Intensities in 180° c-plane

0°	5°	10°	15°	20°	25°	30°	35°	40°	45°	50°	55°	60°	65°	70°	75°	80°	85°	90°	95°
464	461	454	444	431	415	396	374	350	322	292	260	225	189	151	112	74	38	15	3
100%	99%	98%	96%	93%	90%	85%	81%	75%	69%	63%	56%	49%	41%	33%	24%	16%	8%	3%	1%

Beam angle 50%	Field angle 10%	Cutoff angle 2,5%	Intensity ratio in 120° cone	Intensity ratio in 90° cone
118,0°	167,1°	181,1°	75,5%	50,5%

