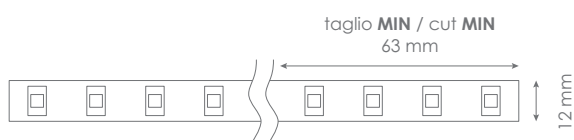


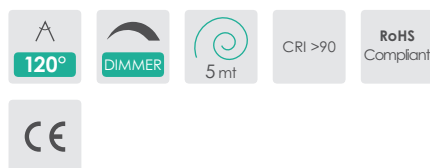
FLEX

STANDARD 1000-4000



SPECIFICATIONS

Alimentazione / Operating Voltage	24 V
Potenza / Power	7,5 W/mt
Larghezza Pcb / Width Pcb	12 mm
Altezza / Height Stripe	2 mm
Lunghezza / Length Stripe	5000 mm
Taglio segmento/ Length per Cut	63 mm
N° LED	128 / mt
IP	20
Temperatura esercizio Storage Temperature	- 30° C - + 70°C
Lifetime	L70B20 50000H



Codice Code	Flusso Luminoso Luminous Flux	Efficienza Efficiency	Colore Luce Led Color
DA-STANDARD-1000-4000	1040 lm/mt	138 lm/W	4000 K



FLEX

STANDARD 1000-4000

Light efficiency:

138 Lumen/Watt

Light quality:

CRI: 92,6

Color temperature:

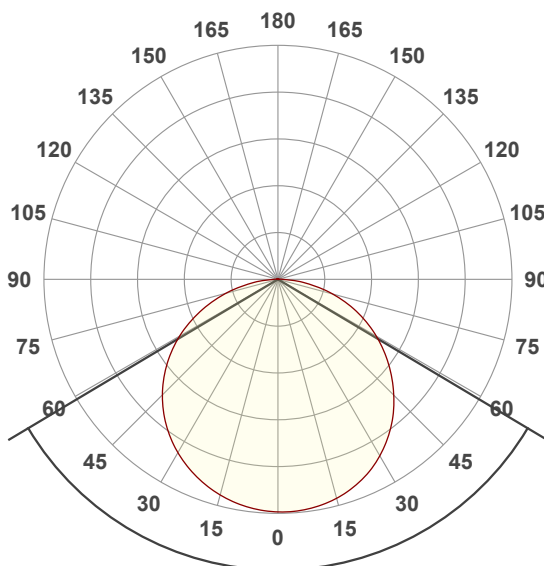
4145 K

Output: 1040 lm

Peak: 334 cd

Power: 7,5 W

24,0V @ 0,313A



Beam angle

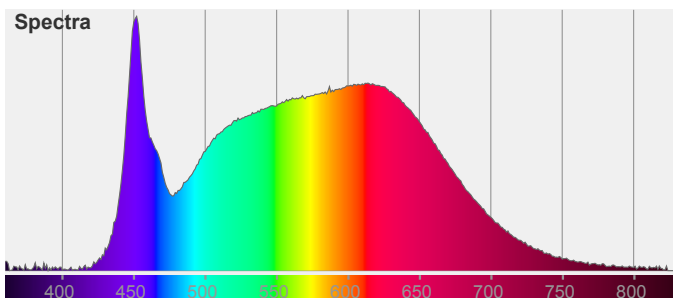
118,4°

Color



CIE1931
x: 0,375
y: 0,376

Spectra



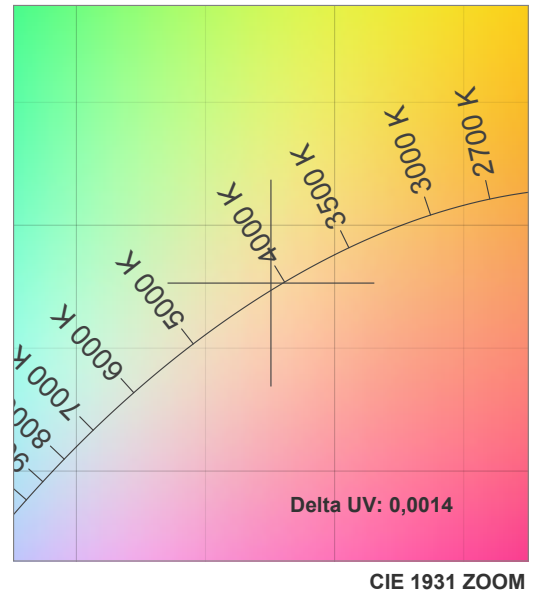
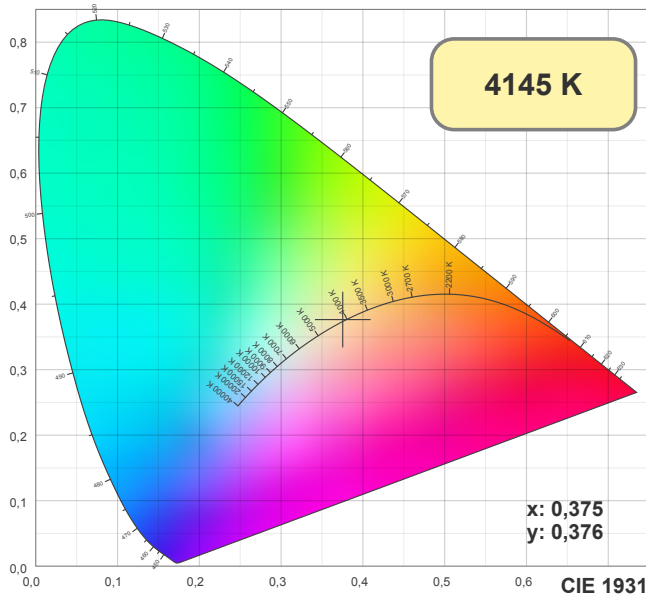
Light measurement was created using the Viso Systems - Light Inspector. www.visosystems.com



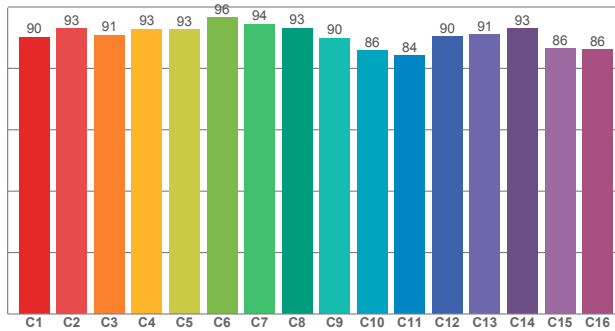
Via Cadorna, 40/42
20032 Cormano (MI)
Tel. +39 02 84269630
Fax +39 02 84269631
info@lightsolution.it
www.lightsolution.it

FLEX

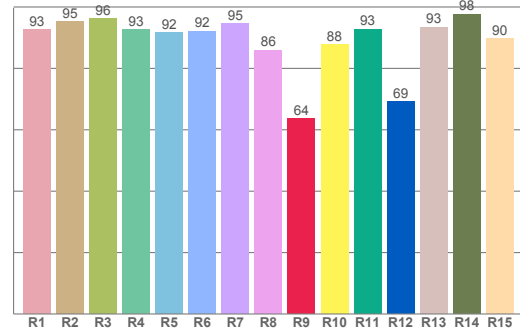
STANDARD 1000-4000



TM30: 90,4



CRI: 92,6 (R1-R8)



CRI R values, only R1-R8 are used to calculate final CRI value

R1	R2	R3	R4	R5	R6	R7	R8	R9	R10	R11	R12	R13	R14	R15
92,63	95,24	96,23	92,63	91,55	92,08	94,59	85,93	63,57	87,75	92,79	69,08	93,48	97,70	89,63

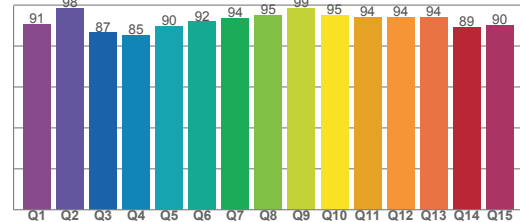
TM30 C values, 16 binned values out of total of 99 C values

C1	C2	C3	C4	C5	C6	C7	C8	C9	C10	C11	C12	C13	C14	C15	C16
90,15	92,99	90,87	92,73	92,53	96,44	94,46	93,11	89,78	85,73	84,22	90,41	90,94	93,00	86,45	86,05

CQS Q values

Q1	Q2	Q3	Q4	Q5	Q6	Q7	Q8	Q9	Q10	Q11	Q12	Q13	Q14	Q15
90,62	98,43	86,52	85,27	89,79	91,91	93,71	95,25	98,65	95,20	94,24	94,27	94,27	89,30	90,15

CQS: 91,6



Color parameters

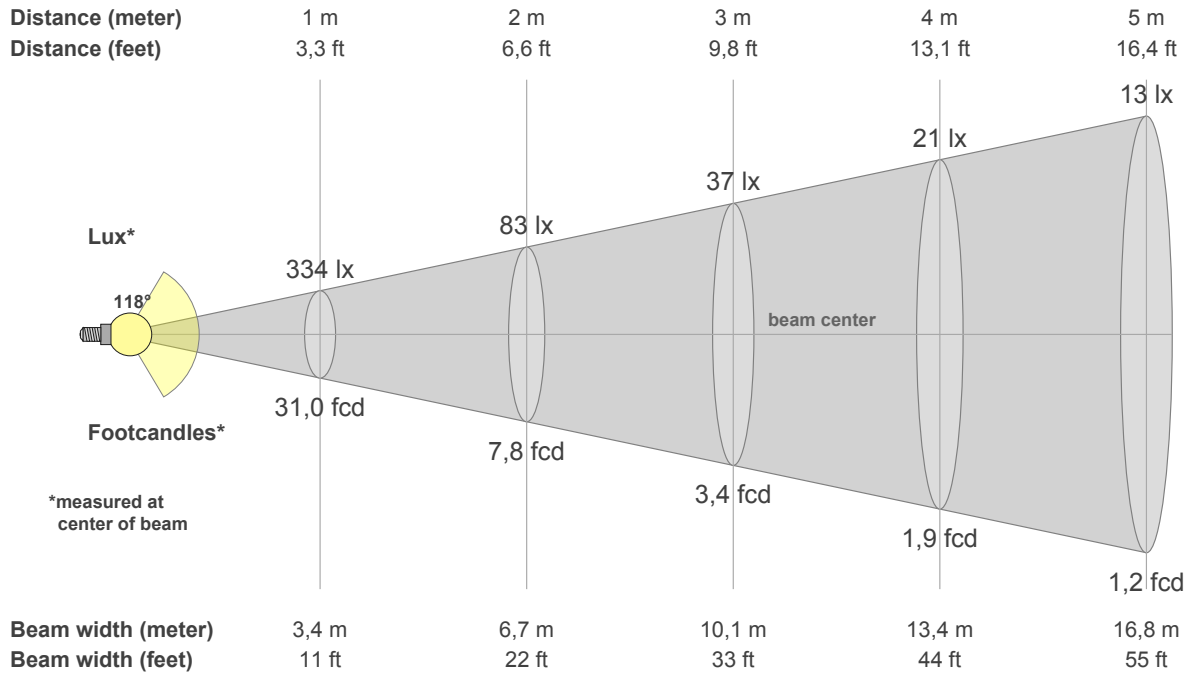
CCT	CRI	CRI R9	TM30 Rf	TM30 Rg	CQS	x	y	u	v	Duv
4145 K	92,6	63,6	90,4	98,1	91,6	0,4	0,4	0,2	0,3	0,0014



Via Cadorna, 40/42
20032 Cormano (MI)
Tel. +39 02 84269630
Fax +39 02 84269631
info@lightsolution.it
www.lightsolution.it

FLEX

STANDARD 1000-4000



Intensities in 0° c-plane

0°	5°	10°	15°	20°	25°	30°	35°	40°	45°	50°	55°	60°	65°	70°	75°	80°	85°	90°	95°
334	334	331	325	317	307	292	276	257	235	212	188	163	137	110	82	54	29	8	3
100%	100%	99%	97%	95%	92%	88%	83%	77%	70%	64%	56%	49%	41%	33%	24%	16%	9%	3%	1%

Intensities in 0° c-plane

0°	5°	10°	15°	20°	25°	30°	35°	40°	45°	50°	55°	60°	65°	70°	75°	80°	85°	90°	95°
334	334	331	325	317	307	292	276	257	235	212	188	163	137	110	82	54	29	8	3
100%	100%	99%	97%	95%	92%	88%	83%	77%	70%	64%	56%	49%	41%	33%	24%	16%	9%	3%	1%

Intensities in 180° c-plane

0°	5°	10°	15°	20°	25°	30°	35°	40°	45°	50°	55°	60°	65°	70°	75°	80°	85°	90°	95°
334	332	328	320	311	301	287	272	255	235	212	189	163	135	107	78	50	26	6	2
100%	99%	98%	96%	93%	90%	86%	81%	76%	70%	64%	57%	49%	41%	32%	23%	15%	8%	2%	1%

Intensities in 180° c-plane

0°	5°	10°	15°	20°	25°	30°	35°	40°	45°	50°	55°	60°	65°	70°	75°	80°	85°	90°	95°
334	332	328	320	311	301	287	272	255	235	212	189	163	135	107	78	50	26	6	2
100%	99%	98%	96%	93%	90%	86%	81%	76%	70%	64%	57%	49%	41%	32%	23%	15%	8%	2%	1%

Beam angle 50%	Field angle 10%	Cutoff angle 2,5%	Intensity ratio in 120° cone	Intensity ratio in 90° cone
118,4°	167,0°	179,4°	75,4%	50,5%

