

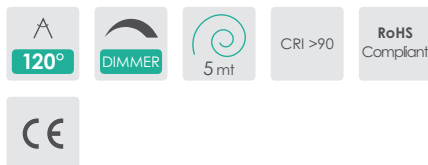
FLEX

STANDARD 1000-3000



SPECIFICATIONS

Alimentazione / Operating Voltage	24 V
Potenza / Power	7,5 W/mt
Larghezza Pcb / Width Pcb	12 mm
Altezza / Height Stripe	2 mm
Lunghezza / Length Stripe	5000 mm
Taglio segmento/ Length per Cut	63 mm
N° LED	128 / mt
IP	20
Temperatura esercizio Storage Temperature	- 30° C - + 70°C
Lifetime	L70B20 50000H



Codice Code	Flusso Luminoso Luminous Flux	Efficienza Efficiency	Colore Luce Led Color
DA-STANDARD-1000-3000	936 lm/mt	125 lm/W	3000 K



FLEX

STANDARD 1000-3000

Light efficiency:

125 Lumen/Watt

Light quality:

CRI: 92,1

Color temperature:

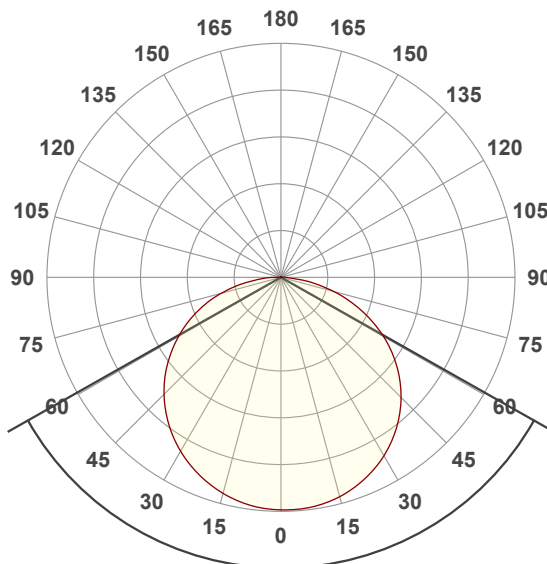
3027 K

Output: 936 lm

Peak: 294 cd

Power: 7,5 W

24,0V @ 0,313A



Beam angle

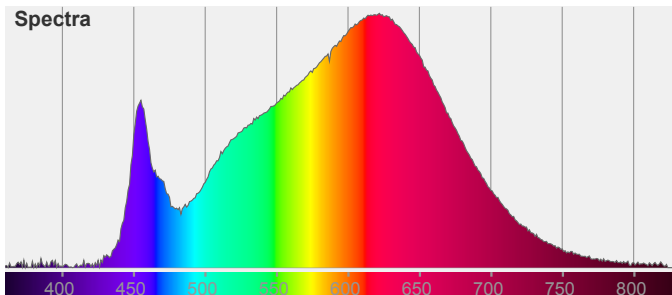
121°

Color



CIE1931
x: 0,434
y: 0,401

Spectra



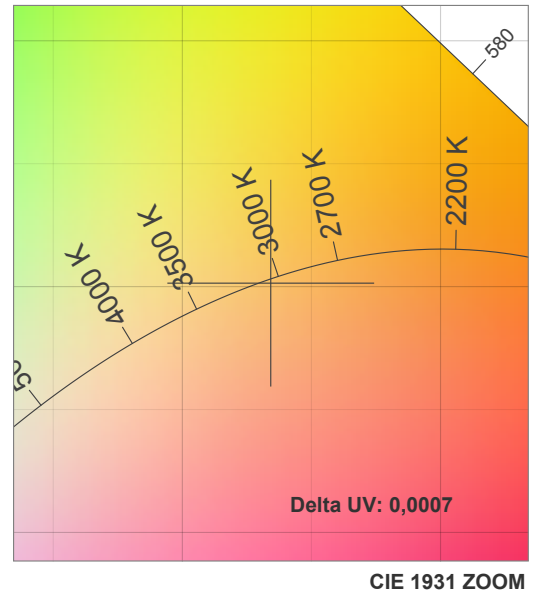
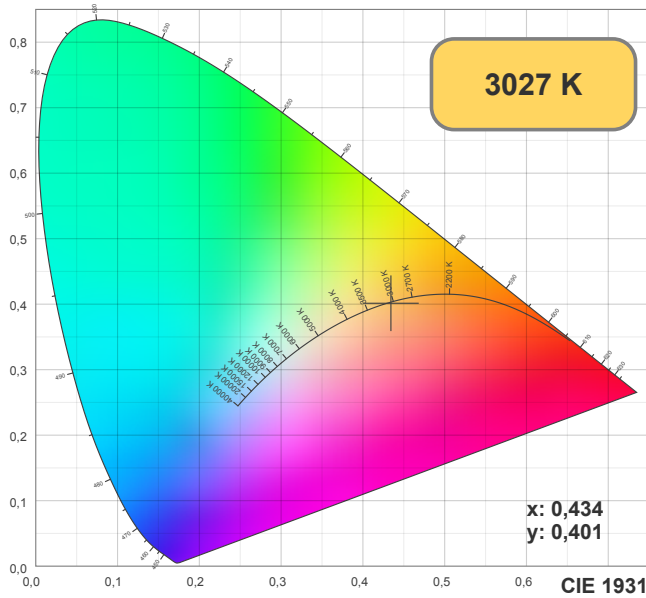
Light measurement was created using the Viso Systems - Light Inspector. www.visosystems.com



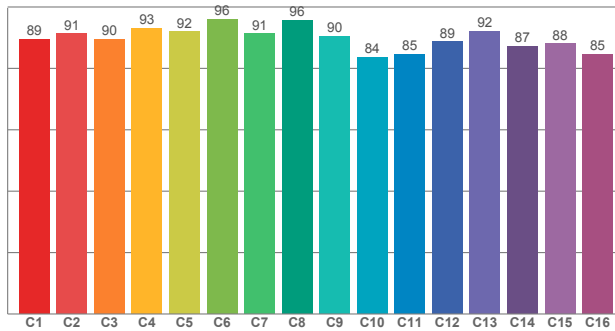
Via Cadorna, 40/42
20032 Cormano (MI)
Tel. +39 02 84269630
Fax +39 02 84269631
info@lightsolution.it
www.lightsolution.it

FLEX

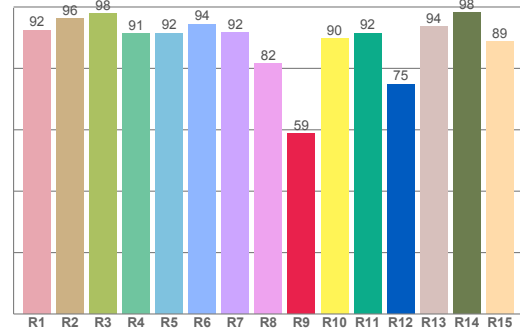
STANDARD 1000-3000



TM30: 89,9



CRI: 92,1 (R1-R8)



CRI R values, only R1-R8 are used to calculate final CRI value

R1	R2	R3	R4	R5	R6	R7	R8	R9	R10	R11	R12	R13	R14	R15
92,48	96,24	97,74	91,40	91,52	94,43	91,68	81,58	58,75	89,61	91,51	74,82	93,62	98,17	88,75

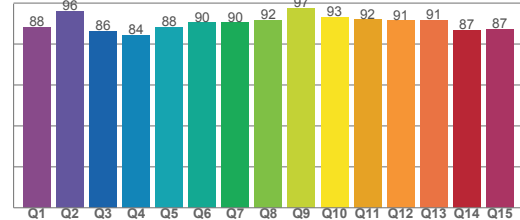
TM30 C values, 16 binned values out of total of 99 C values

C1	C2	C3	C4	C5	C6	C7	C8	C9	C10	C11	C12	C13	C14	C15	C16
89,48	91,29	89,55	93,13	91,88	96,05	91,23	95,74	90,48	83,68	84,64	88,70	92,10	87,26	88,14	84,61

CQS Q values

Q1	Q2	Q3	Q4	Q5	Q6	Q7	Q8	Q9	Q10	Q11	Q12	Q13	Q14	Q15
88,36	95,88	86,22	84,33	88,19	90,42	90,50	91,58	97,45	93,30	91,95	91,47	91,50	86,80	87,40

CQS: 89,6



Color parameters

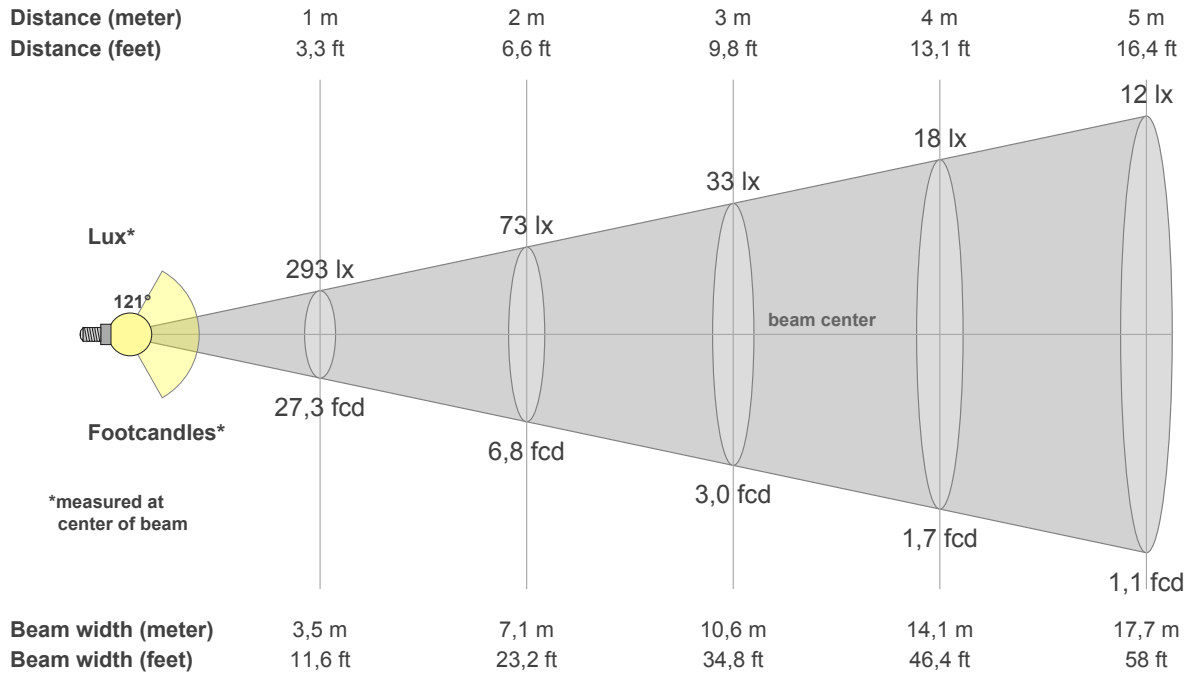
CCT	CRI	CRI R9	TM30 Rf	TM30 Rg	CQS	x	y	u	v	Duv
3027 K	92,1	58,8	89,9	98,3	89,6	0,4	0,4	0,2	0,3	-0,0007



Via Cadorna, 40/42
20032 Cormano (MI)
Tel. +39 02 84269630
Fax +39 02 84269631
info@lightsolution.it
www.lightsolution.it

FLEX

STANDARD 1000-3000



Intensities in 0° c-plane

0°	5°	10°	15°	20°	25°	30°	35°	40°	45°	50°	55°	60°	65°	70°	75°	80°	85°	90°	95°
293	293	291	287	279	270	260	246	231	214	195	173	149	124	97	70	42	20	6	1
100%	100%	99%	98%	95%	92%	89%	84%	79%	73%	66%	59%	51%	42%	33%	24%	14%	7%	2%	0%

Intensities in 0° c-plane

0°	5°	10°	15°	20°	25°	30°	35°	40°	45°	50°	55°	60°	65°	70°	75°	80°	85°	90°	95°
293	293	291	287	279	270	260	246	231	214	195	173	149	124	97	70	42	20	6	1
100%	100%	99%	98%	95%	92%	89%	84%	79%	73%	66%	59%	51%	42%	33%	24%	14%	7%	2%	0%

Intensities in 180° c-plane

0°	5°	10°	15°	20°	25°	30°	35°	40°	45°	50°	55°	60°	65°	70°	75°	80°	85°	90°	95°
293	292	288	282	274	264	253	240	225	208	190	170	149	127	103	78	53	29	12	2
100%	99%	98%	96%	93%	90%	86%	82%	77%	71%	65%	58%	51%	43%	35%	27%	18%	10%	4%	1%

Intensities in 180° c-plane

0°	5°	10°	15°	20°	25°	30°	35°	40°	45°	50°	55°	60°	65°	70°	75°	80°	85°	90°	95°
293	292	288	282	274	264	253	240	225	208	190	170	149	127	103	78	53	29	12	2
100%	99%	98%	96%	93%	90%	86%	82%	77%	71%	65%	58%	51%	43%	35%	27%	18%	10%	4%	1%

Beam angle 50%	Field angle 10%	Cutoff angle 2,5%	Intensity ratio in 120° cone	Intensity ratio in 90° cone
121,0°	167,8°	180,4°	74,9%	49,7%

