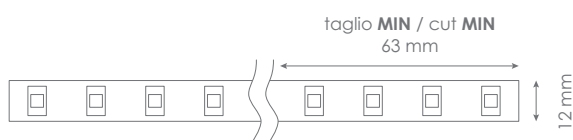
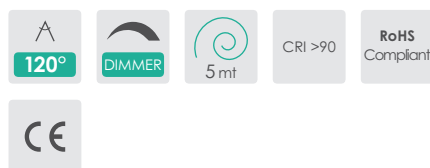


## FLEX STANDARD 1000-2700



### SPECIFICATIONS

Alimentazione / Operating Voltage	24 V
Potenza / Power	7,5 W/mt
Larghezza Pcb / Width Pcb	12 mm
Altezza / Height Stripe	2 mm
Lunghezza / Length Stripe	5000 mm
Taglio segmento/ Length per Cut	63 mm
N° LED	128 / mt
IP	20
Temperatura esercizio Storage Temperature	- 30° C - + 70°C
Lifetime	L70B20 50000H



Codice Code	Flusso Luminoso Luminous Flux	Efficienza Efficiency	Colore Luce Led Color
DA-STANDARD-1000-2700	845 lm/mt	112 lm/W	2700 K



# FLEX

## STANDARD 1000-2700

Light efficiency:

112 Lumen/Watt

Light quality:

CRI: 94,7

Color temperature:

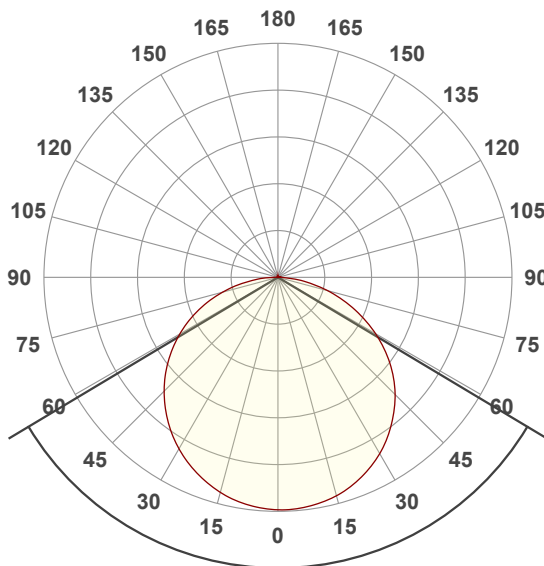
2787 K

Output: 845 lm

Peak: 273 cd

Power: 7,5 W

24,0V @ 0,313A



Beam angle

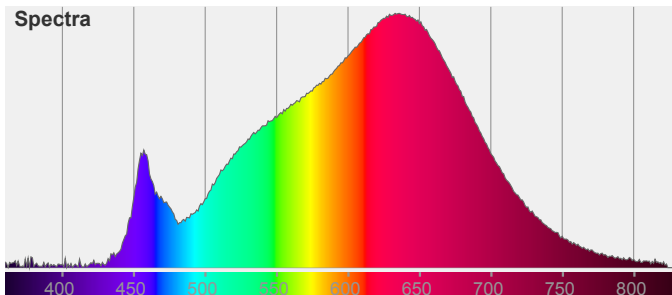
118,2°

Color



CIE1931  
x: 0,455  
y: 0,413

Spectra



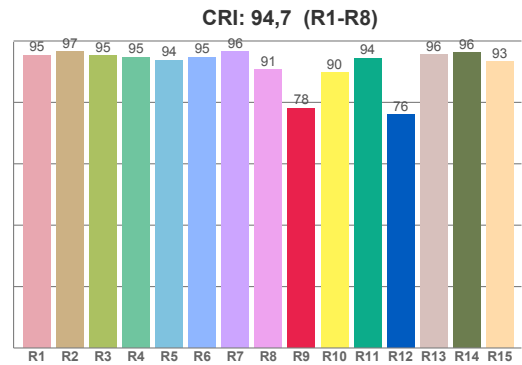
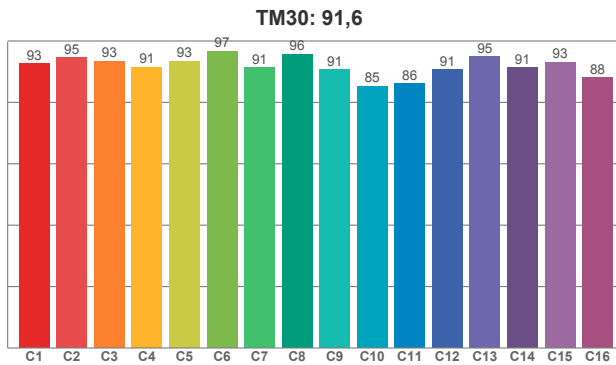
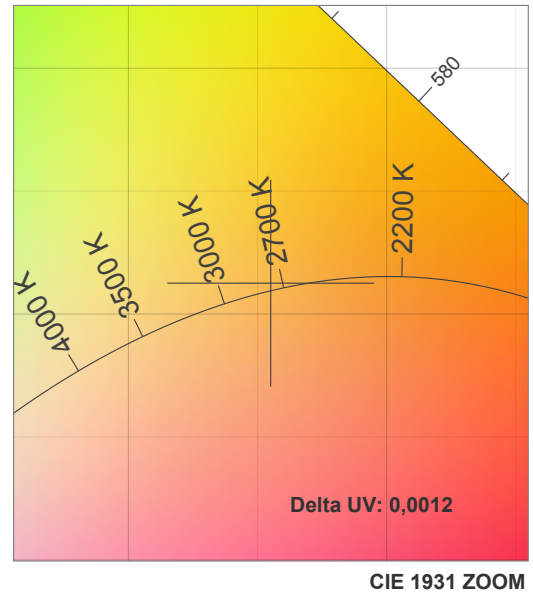
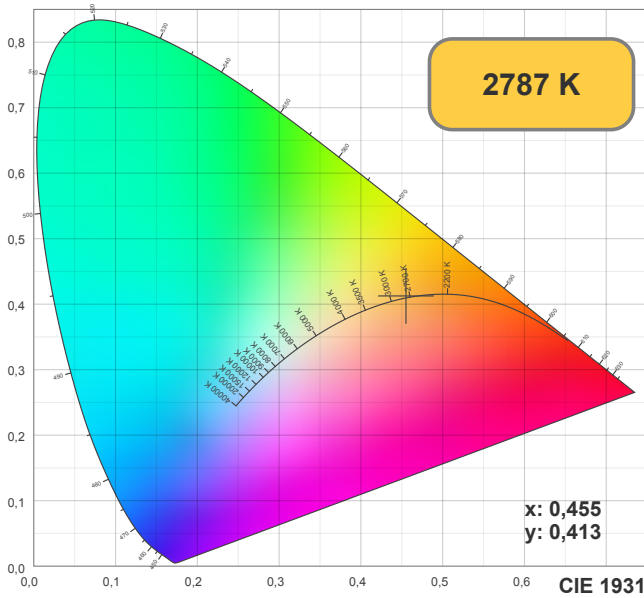
Light measurement was created using the Viso Systems - Light Inspector. [www.visosystems.com](http://www.visosystems.com)



Via Cadorna, 40/42  
20032 Cormano (MI)  
Tel. +39 02 84269630  
Fax +39 02 84269631  
[info@lightsolution.it](mailto:info@lightsolution.it)  
[www.lightsolution.it](http://www.lightsolution.it)

# FLEX

## STANDARD 1000-2700



**CRI R values, only R1-R8 are used to calculate final CRI value**

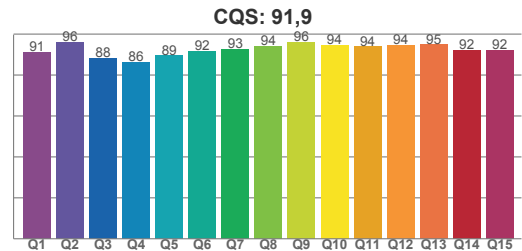
R1	R2	R3	R4	R5	R6	R7	R8	R9	R10	R11	R12	R13	R14	R15
95,35	96,52	95,31	94,75	93,69	94,74	96,44	90,74	78,10	89,67	94,42	76,02	95,62	96,29	93,30

**TM30 C values, 16 binned values out of total of 99 C values**

C1	C2	C3	C4	C5	C6	C7	C8	C9	C10	C11	C12	C13	C14	C15	C16
92,70	94,59	93,44	91,41	93,36	96,74	91,32	95,75	90,72	85,34	86,19	90,75	94,81	91,26	93,12	87,96

**CQS Q values**

Q1	Q2	Q3	Q4	Q5	Q6	Q7	Q8	Q9	Q10	Q11	Q12	Q13	Q14	Q15
91,06	96,05	88,25	86,48	89,43	91,55	92,69	94,20	95,99	94,42	93,83	94,49	94,86	92,12	92,31



### Color parameters

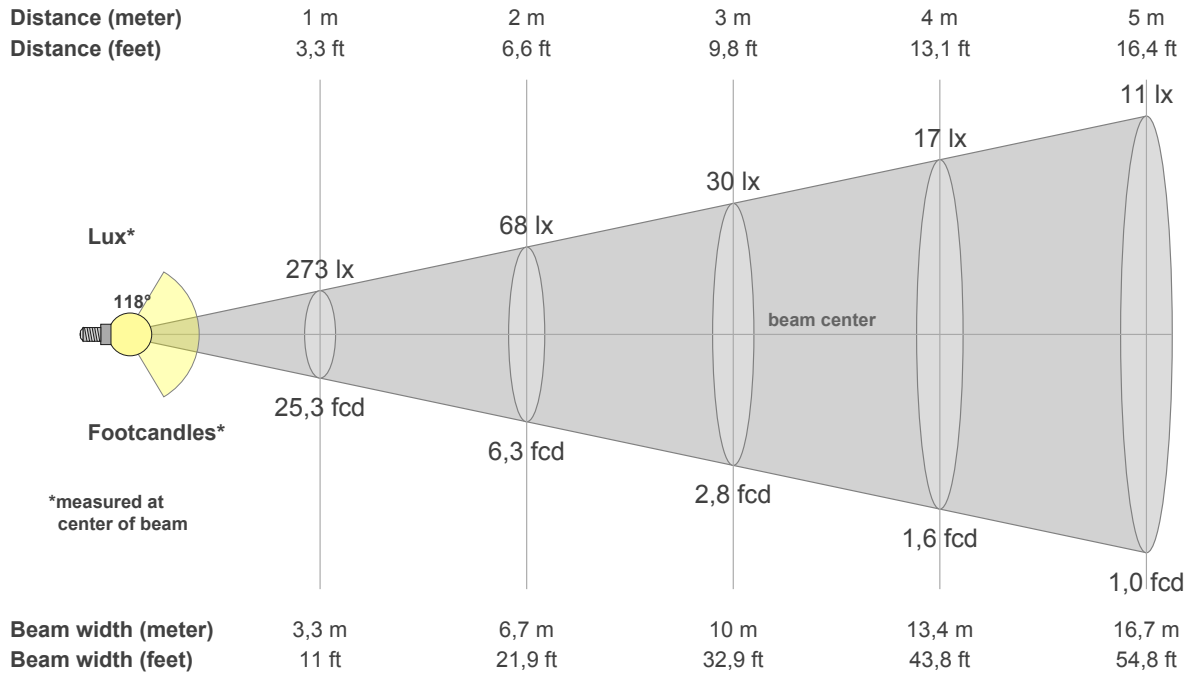
CCT	CRI	CRI R9	TM30 Rf	TM30 Rg	CQS	x	y	u	v	Duv
2787 K	94,7	78,1	91,6	98,4	91,9	0,5	0,4	0,3	0,4	0,0012



Via Cadorna, 40/42  
20032 Cormano (MI)  
Tel. +39 02 84269630  
Fax +39 02 84269631  
info@lightsolution.it  
www.lightsolution.it

# FLEX

## STANDARD 1000-2700



### Intensities in 0° c-plane

0°	5°	10°	15°	20°	25°	30°	35°	40°	45°	50°	55°	60°	65°	70°	75°	80°	85°	90°	95°
273	272	270	265	258	250	239	226	211	195	176	155	133	109	85	61	38	19	5	1
100%	100%	99%	97%	95%	92%	88%	83%	77%	71%	64%	57%	49%	40%	31%	22%	14%	7%	2%	0%

### Intensities in 0° c-plane

0°	5°	10°	15°	20°	25°	30°	35°	40°	45°	50°	55°	60°	65°	70°	75°	80°	85°	90°	95°
273	272	270	265	258	250	239	226	211	195	176	155	133	109	85	61	38	19	5	1
100%	100%	99%	97%	95%	92%	88%	83%	77%	71%	64%	57%	49%	40%	31%	22%	14%	7%	2%	0%

### Intensities in 180° c-plane

0°	5°	10°	15°	20°	25°	30°	35°	40°	45°	50°	55°	60°	65°	70°	75°	80°	85°	90°	95°
273	271	267	261	254	244	232	220	205	189	172	153	133	112	90	68	45	24	9	2
100%	99%	98%	96%	93%	89%	85%	80%	75%	69%	63%	56%	49%	41%	33%	25%	17%	9%	3%	1%

### Intensities in 180° c-plane

0°	5°	10°	15°	20°	25°	30°	35°	40°	45°	50°	55°	60°	65°	70°	75°	80°	85°	90°	95°
273	271	267	261	254	244	232	220	205	189	172	153	133	112	90	68	45	24	9	2
100%	99%	98%	96%	93%	89%	85%	80%	75%	69%	63%	56%	49%	41%	33%	25%	17%	9%	3%	1%

Beam angle 50%	Field angle 10%	Cutoff angle 2,5%	Intensity ratio in 120° cone	Intensity ratio in 90° cone
118,2°	166,7°	179,3°	75,7%	50,6%

